

TPZ Planetary Counter-Current Mixers

TEKA TPZ Planetary Counter-Current Mixers are for batching operations, and available in sizes ranging from 250 – 4,500 liters filling capacity, yielding output capacities from 0.2 to 4.0 cu.yds.

With 11 available mixer sizes, concrete producers can choose the model that best suits their specific batching requirements.



TPZ Mixer Advantages:

- Intensive, efficient mixing and homogenization of batch materials in the shortest possible time
- High output, at consistent product quality, even for the most diverse mix designs
- Compact user-friendly design with high operational safety
- Long life expectancy, with low investment and operational costs
- Numerous available options and accessories allow customers to tailor the mixer layout to their specific production needs
- Hydraulic Turbo Coupling on TPZ 750 and larger as standard equipment

TPZ Mixer Design Features:

- Low overall height due to externally mounted Discharge Gate assembly
- Easy access to areas inside of mixer
- Robust and compact design of drive system, with only one high-efficiency drive motor



TPZ Planetary Counter-Current Mixers

TPZ Mixers have hydraulically operated Discharge Gates (up to four per mixer).

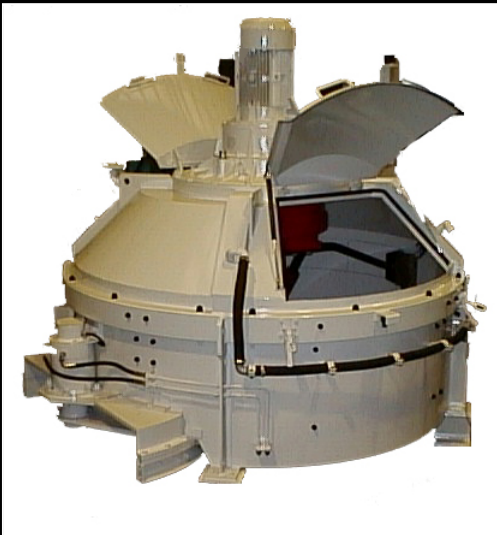
Features include:

- a manual pump to open gate(s) in case of plant power outage
- short discharge times due to large gate opening
- ability for partial opening only



The design of the mixer hood of TPZ Mixers consists of:

- multiple possible locations for material inlets
- large self-opening access doors for cleaning and maintenance
- access doors can be at 90 or 180 degrees to each other
- access doors are equipped with electronic safety switches
- a separate inspection window with protective mesh



TPZ Planetary Counter-Current Mixers

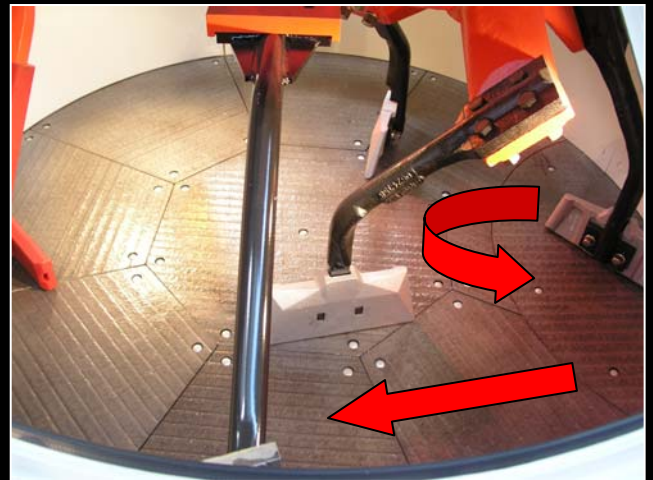
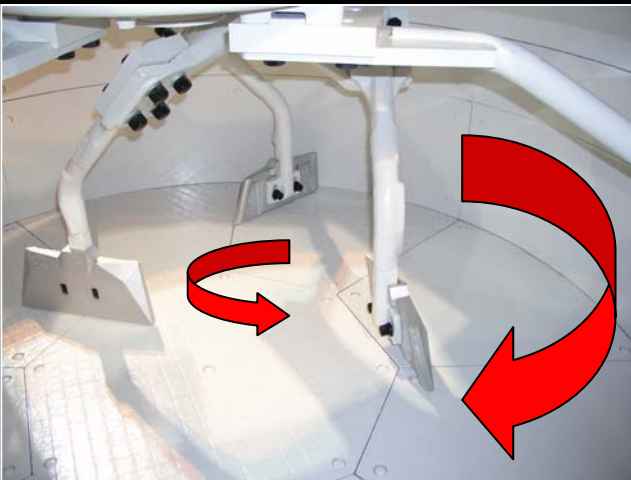
Low maintenance and user-friendly design features include:

- gearbox oil changes only every 2,500 hours
- optional programmable Central Lubrication System



TPZ Mixing Arm Design & Rotation:

TPZ Mixers have mixing stars that rotate in the opposite direction of the main rotation. This generates a true *counter-current* flow of the batch materials, resulting in a more aggressive mixing action, shorter cycle times, and therefore less wear.



TPZ Planetary Counter-Current Mixers

TPZ Mixer Options & Accessories:

Depending on batch plant design and building dimensions, customers can benefit from incorporating **Skip Hoists** to charge the mixer. TEKA offers tilting skip hoists, as well as the non-tilting, bottom discharge type.

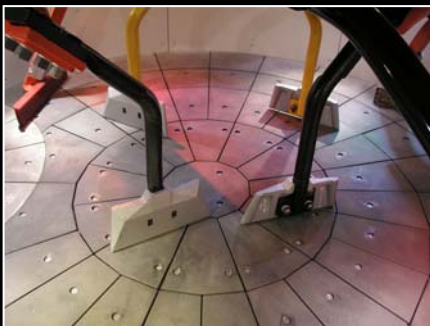
Standard inclination of the skip hoist track is 60°, but inclinations up to 90° are possible.



All TEKA mixers can be outfitted with a WALTER **Automatic Water Wash-Out System**.



For very abrasive batch materials or to extend wear life, TEKA mixers can be lined with Chill-Cast Tiles or Hard-faced steel wear plates coated with chromium carbide.



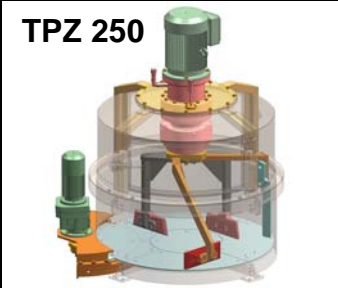
Chill-Cast Tiles



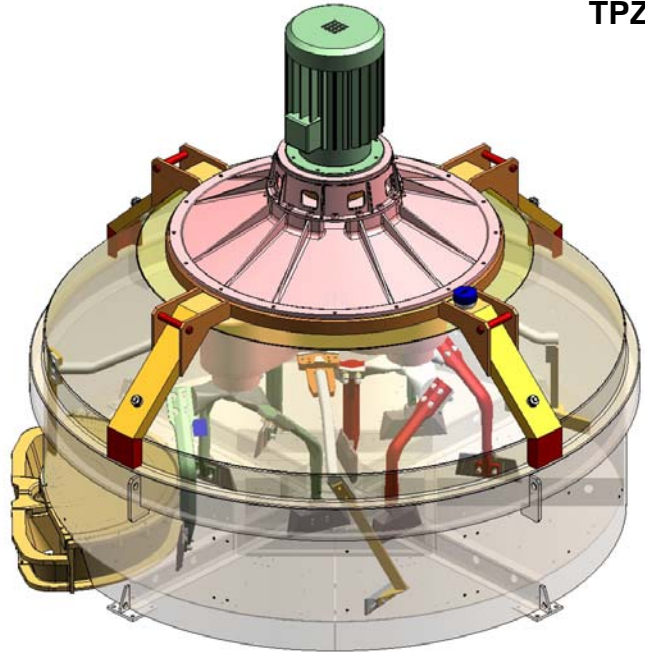
Hard-faced
steel plates

TPZ Planetary Counter-Current Mixers

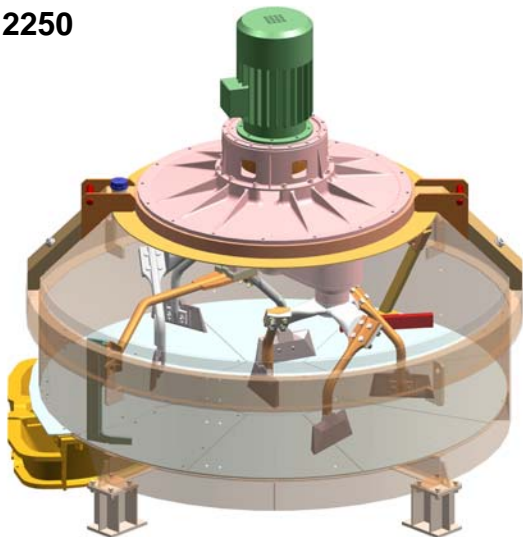
TPZ 250



TPZ 3750



TPZ 2250



TPZ 1125

